

# Jeg Hybrid Data Base

10 lipca 2013

	Basic	TA/SA	Time	I, P, B
Bit-rate	1, 2, 4, 8, 16 Mbit/s			
QP	26, 32, 38, 46			
GOP length	8, 16, 32, 64	32, 64		
Nr of B fr.	0, 2, 3, 7	2		
B-pyramid	strict, none	none		
Frame rate	25	12, 8	25	
Resolution	1920x1080	960x540, 480x270	1920x1080	
Pixel motion	Default		dia, esa, umh	Default
Search range	Default		4, 64	Default
Ref. frames	Default		4, 16	Default
Slices per frame	1, 2			1
I to P frame ratio	Default			0.8, 1.0, 1.2, 1.4
P to B frame ratio	Default			0.5, 0.8, 1.0, 1.2, 1.4

## **synatStructH264**

SRC, Fps, Bitrate, Qp, Bframes, Keyint, BPyramid, Slices, Ipratio, Pbratio, Me, Merange, Ref, Width, Height, Block, Blur, Compression, PacketLoss, Interlace, Ta, Sa, PSNR, SSIM, VIF, FileSize, PsvCategory, VQM

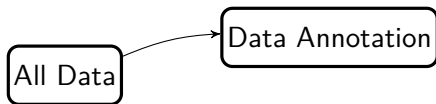
## **synatStructJEG264**

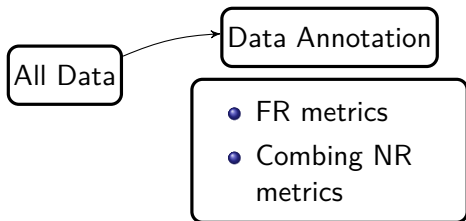
Src, Hrc, Block, Blur, Compression, VQM, Interlace, SUBJECTS\_RESULTS, PacketLoss, Bitrate, Qp, GOPstructure, FPS, Width, Height, Merange, Slice, Encoder, Decoder, PacketLossDescription, Remarks, Ta, Sa, PSNR, SSIM, VIF

## **synatStructVqegHD**

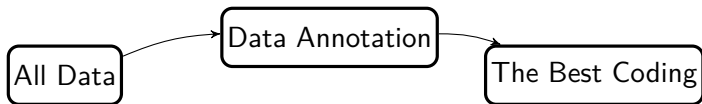
Test, SRC, HRC, SupersetDMOS, SupersetDSTD, PSNRvqeg, NTT, Opticom, Swissqual, Tektronix, YonseiFR, YonseiRR56k, YonseiRR128k, YonseiRR256k, SupersetMOS, SupersetSTD, SUBJECTS\_RESULTS, MOS, DMOS, MOS\_STDEV, DMOS\_STDEV, PacketLoss, Compression, Interlace, Qp, FPS, Bitrate, VQM, Ta, Sa, Block, Blur, PSNR, SSIM, VIF

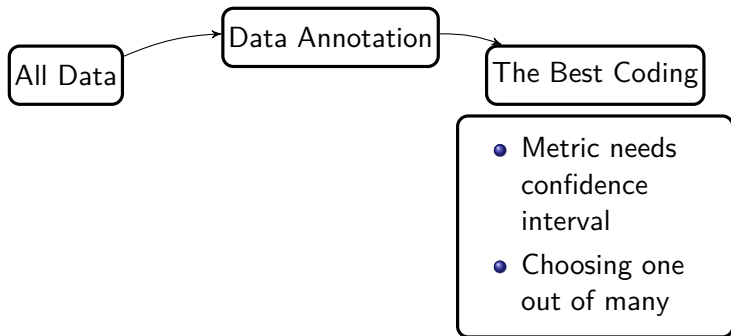
All Data



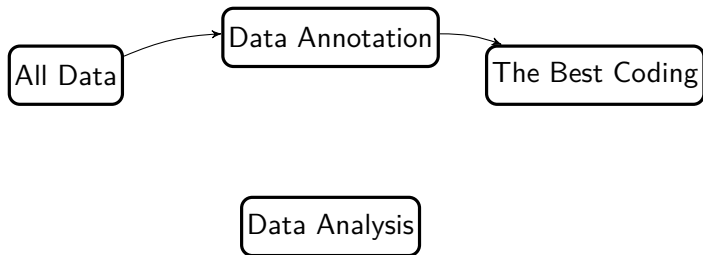


# Data Analysis Description

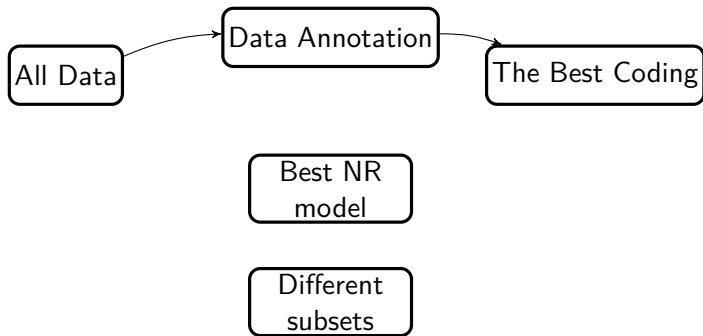




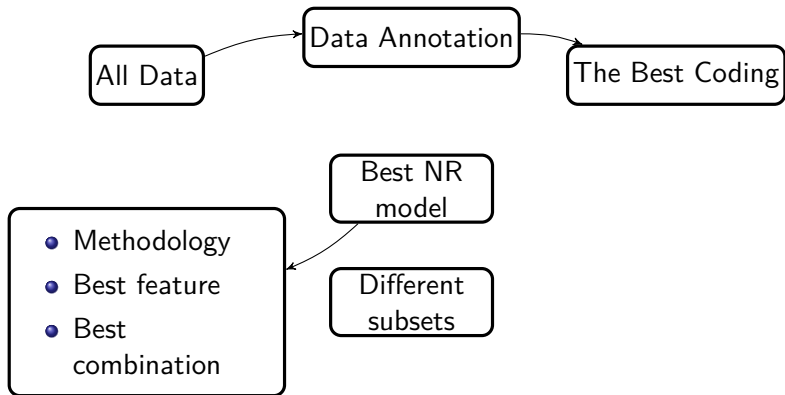




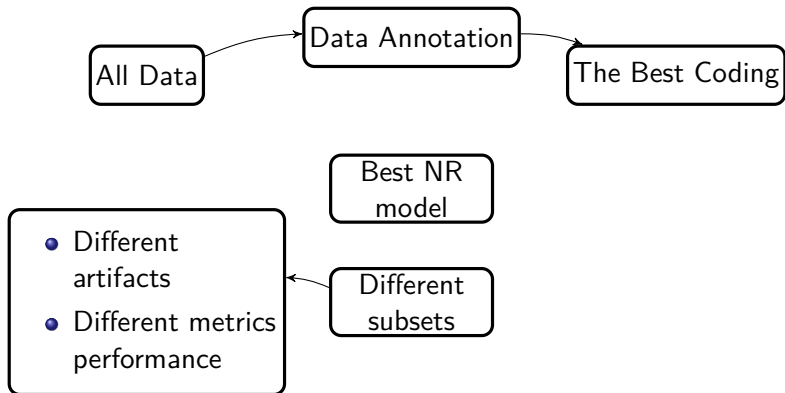
# Data Analysis Description



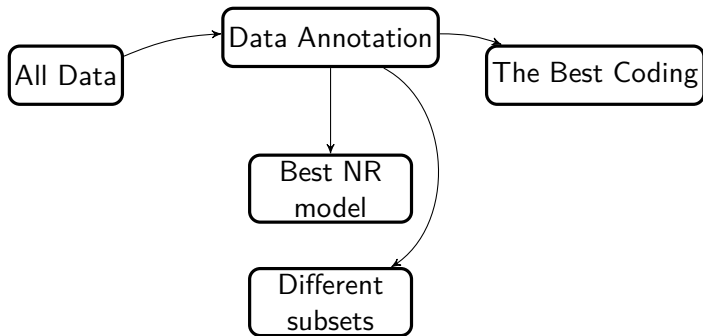
# Data Analysis Description



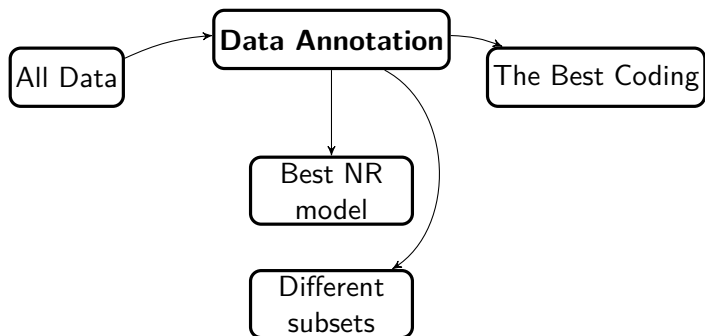
# Data Analysis Description



# Data Analysis Description

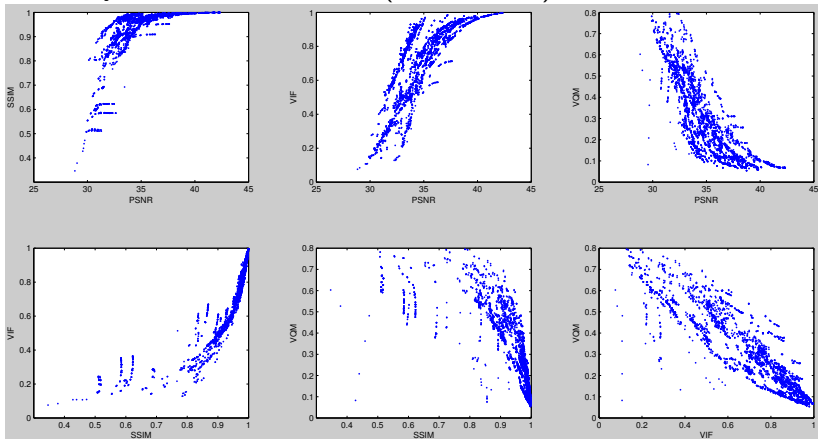


# Preliminary Results



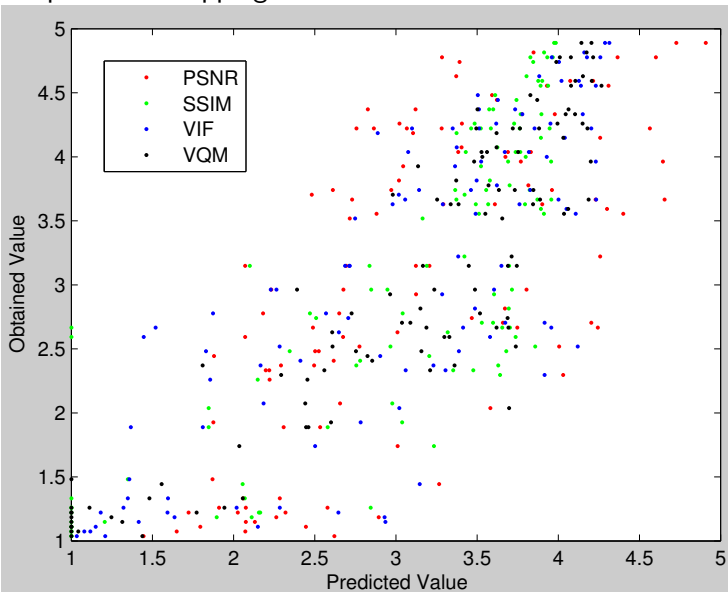
# Preliminary Results

Currently available FR metrics (mean values).



# Preliminary Results

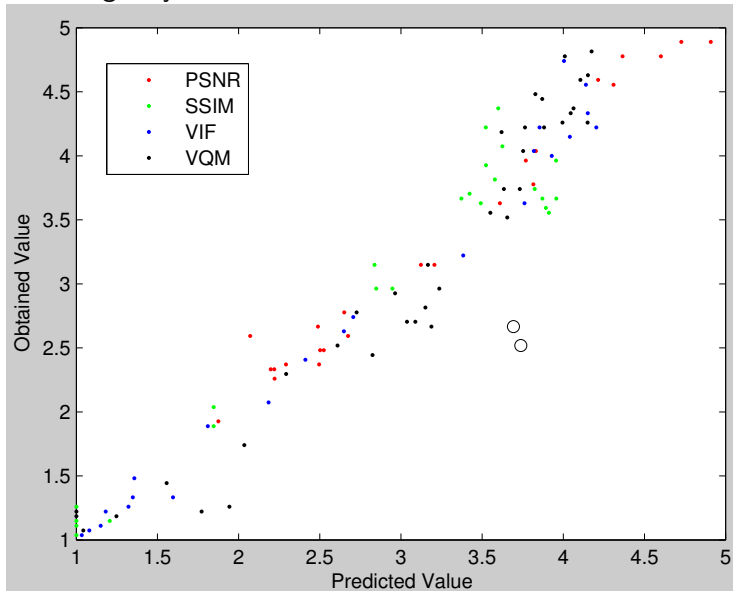
Simple MOS mapping.



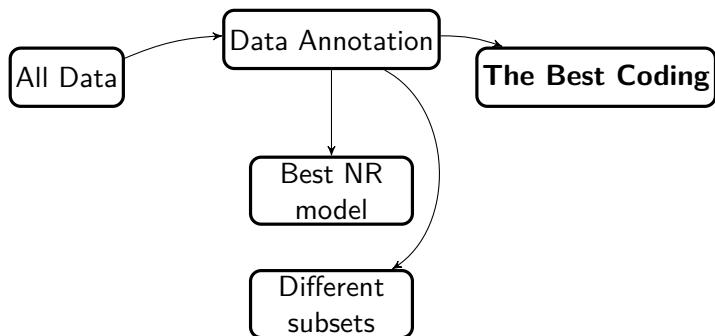


# Preliminary Results

Choosing only best metrics.

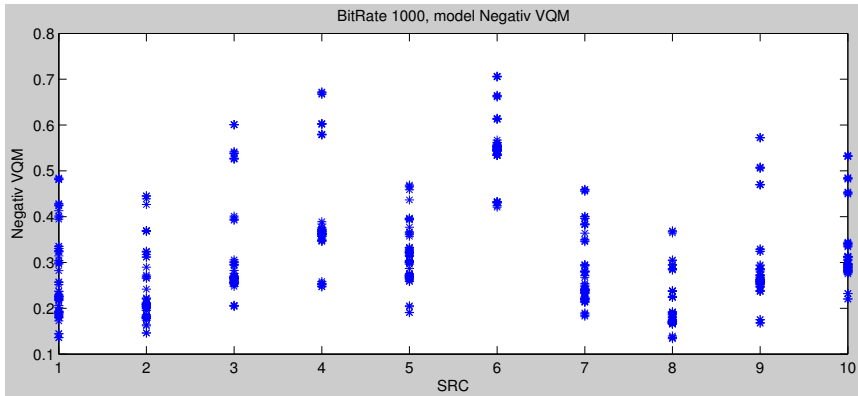


# Preliminary Results



# Preliminary Results

Many different correct answers.



# Preliminary Results

Many different correct answers.

